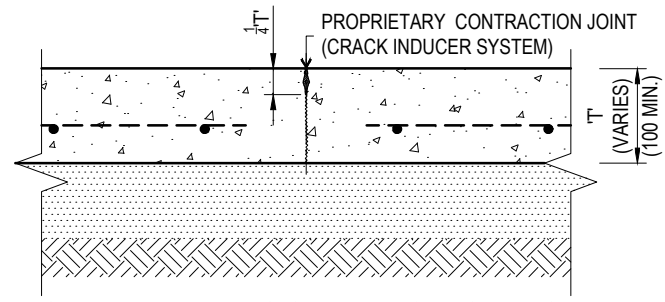
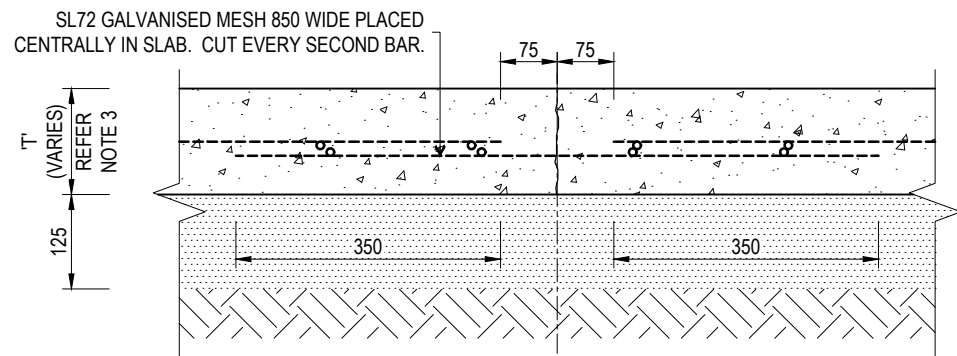


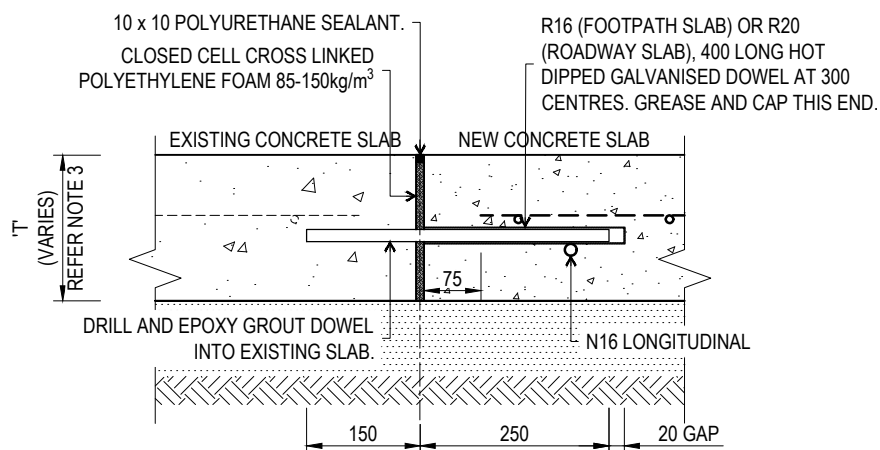
CONTRACTION JOINT
SAWN JOINT (SJ)



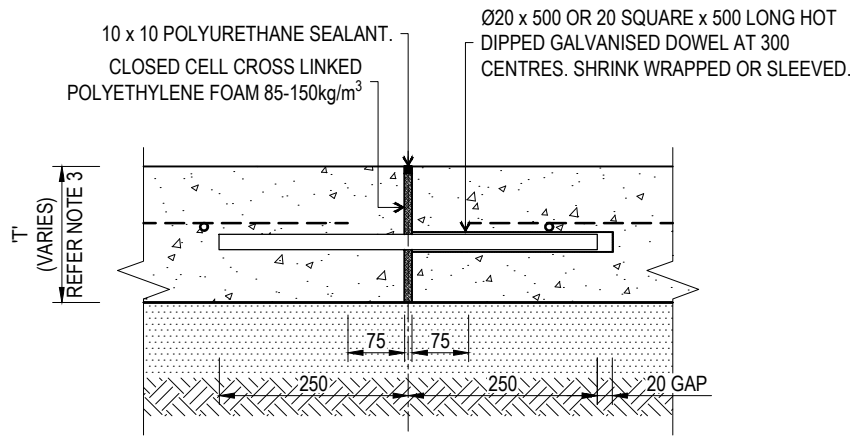
PROPRIETARY CONTRACTION JOINT
(CRACK INDUCER SYSTEM)



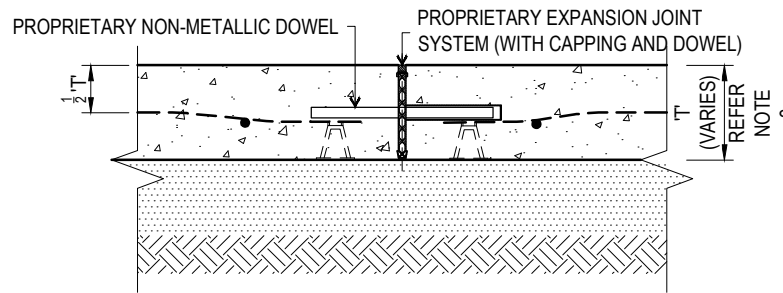
CONSTRUCTION JOINT
(CJ)



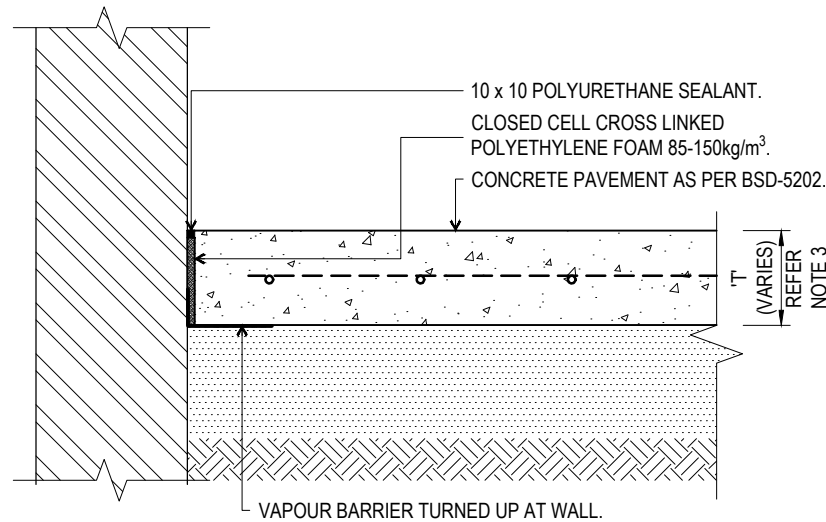
DOWEL JOINT TO EXISTING SLAB



EXPANSION JOINT
(EJ)

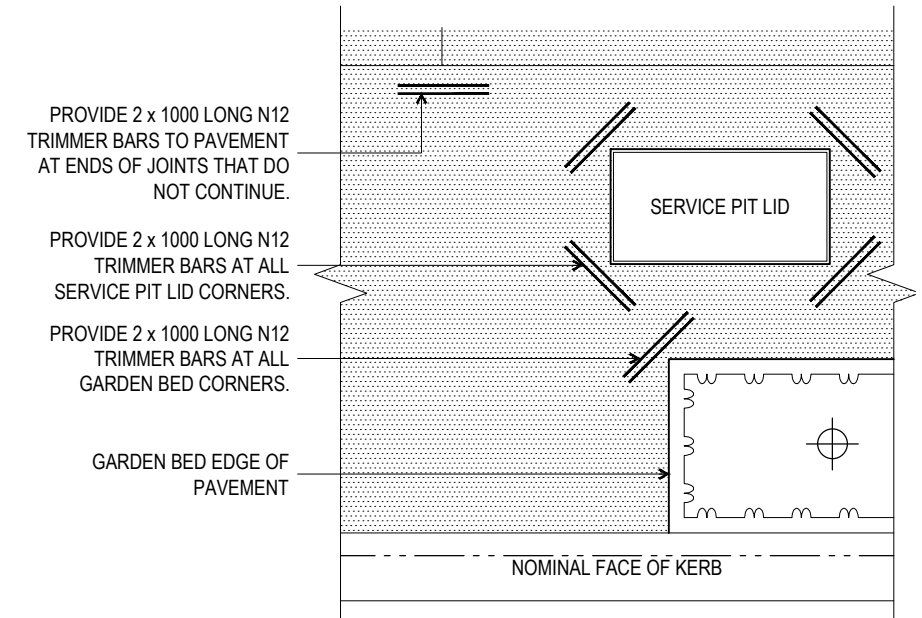


PROPRIETARY EXPANSION JOINT SYSTEM
(WITH DOWEL) (EJ2)



ISLOLATION JOINT (IJ)

NOTE: THERE IS NO NEED TO PROVIDE EXPANSION OR CONTRACTION JOINTS TO PIT LIDS OR CORNERS OF GARDEN BEDS UNLESS SHOWN ON SURFACE TREATMENT PLANS. PROVIDE TRIMMER BARS OPPOSITE ALL ENDS OF JOINTS THAT DO NOT CONTINUE ACROSS ADJOINING PAVEMENT.



SERVICE PIT LIDS
TRIMMER BAR LOCATIONS

GENERAL NOTES

1. REFER TO CONCRETE FOOTPATH DETAIL ON BSD-5202 FOR STANDARD CONCRETE NOTES AND DETAILS.
2. ENGINEER TO REVIEW REINFORCEMENT TYPE WHEN IN A MARINE OR CORROSIVE ENVIRONMENT.
3. 'T' VARIES DEPENDING ON PROPOSED USE OF FOOTPATH. 180 THICK AT DRIVEWAYS AND 125 THICK ELSEWHERE. REFER TO BSD-5202.
4. ALL DOWELS TO BE PERPENDICULAR TO JOINT AND PARALLEL TO EACH OTHER. DOWELS TO BE HOT DIP GALVANISED.
5. GALVANISED MESH IS TO BE USED ON ALL CONTRACTION JOINTS.
6. PROPRIETY CRACK INDUCER PRODUCTS MAY BE USED IN PLACE OF SAW-CUTTING ON CONTRACTION JOINTS.
7. PROPRIETARY EXPANSION JOINT SYSTEM MAY BE USED IN PLACE OF STANDARD EXPANSION JOINT(S).
8. ALL DIMENSIONS IN MILLIMETRES (U.N.O.).

THE PURPOSE OF THIS STANDARD DRAWING IS TO PROVIDE TYPICAL DETAILS THAT SUPPORT THE DESIRED OUTCOMES OF THE BRISBANE CITY PLAN 2014 AND ASSOCIATED PLANNING SCHEME POLICIES. THE FITNESS FOR PURPOSE OF THIS STANDARD DRAWING FOR A SPECIFIC PROJECT SHOULD BE ASSESSED AND ACCEPTED BY AN APPROPRIATELY QUALIFIED DESIGNER AND/OR REGISTERED PROFESSIONAL ENGINEER OF QUEENSLAND (RPEQ).



BRISBANE CITY COUNCIL STANDARD DRAWING

CONCRETE PAVEMENT
JOINT DETAILS AND
SERVICE PIT LIDS

PUBLISH DATE	SEP 2024
SCALE	NOT TO SCALE
DRAWING NUMBER	BSD-5206
ORIGINAL SIZE	A3
REVISION	B